

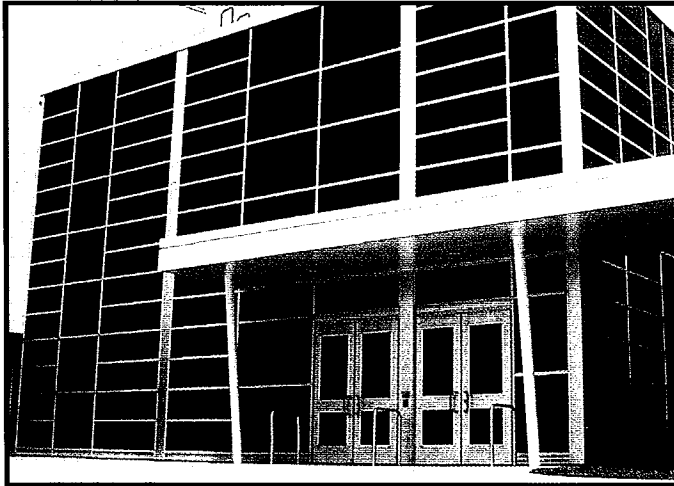
**Arch Aluminum
& Glass Co., Inc.**

YOUR TRUE SINGLE SOURCE®

Arch Aluminum & Glass

Manufacturer of Amarlite® Architectural Aluminum Systems

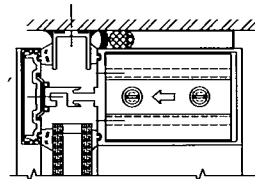
PBS 383 Curtain Wall System



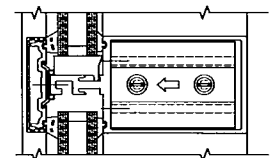
PBS 383 is a true Curtain Wall with strong performance. A 2½" sightline with varying depth back members able to meet specific project requirements. The pressure plates come pre-loaded with a thermal separator. Structural Silicone Glazed verticals are optional. Any of the wide range of Arch doors can be glazed using sub-frame adaptors. System can be integrated with a variety of infills from ¼" to 1". The face cover design allows various finish options. PBS 383 Curtainwall is available in standard anodized, Kynar®, or environmentally smart Archkote Powder Coat finish.

PBS 383 Curtain Wall System

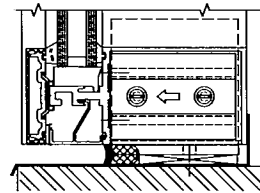
- Air:** ASTM E283: air infiltration shall not exceed .06 CFM when tested at 6.24 PSF.
- Water:** ASTM E 331: no uncontrolled Water when tested at 15 PSF.
- Thermal:** ASTM C236: when tested with 1" infill, CRF for the system shall not be less than 55, U-value shall not exceed .70 BTU.
- Structure:** ASTM E330: Maximum deflection of 1/175 of the span with an allowable stress factor of 1.65.
- Details:** Complete system details are available on the Arch Product CD or from the web at www.archaluminum.net or www.hurricanecodes.com



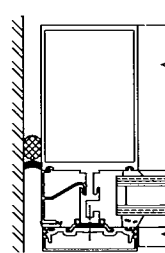
SECTION A1
1" GLAZING



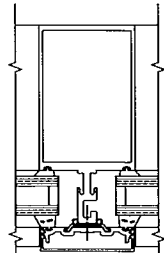
SECTION B
1" GLAZING



SECTION C
1" GLAZING



SECTION D
1" GLAZING



SECTION E
1" GLAZING

Arch Aluminum and Glass is proud to be your True Single-Source Supplier of all your needs from Specification Sections: 08400; 08700; 08800 and 08900.