



Arch Aluminum & Glass Co., Inc.  
Your True Single Source®



## 3100 & L3100 IMPACT WALL



The 3100 & L3100 Impact Framing System manufactured by Arch Aluminum and Glass has been designed & tested to meet the Miami-Dade Impact Codes and has been updated to meet the 2004 Florida Building Code (FBC). The 3100/L3100 Impact Wall is a complete Tested System, consisting of Laminated Glass, Aluminum Framing, Silicone, Gasket and anchors. This System consist of a 2 3/4" Vertical & Horizontal, 2" Perimeter x 4 1/2" depth Aluminum mullion with removable glass stops for interior offset glazing, shear block joint construction, and 9/16" Laminated or 1 5/16" Insulated Laminated Glass using varies interlayer of .090 PVB, HP100 & SGP. When installing or designing your next project, check our Product Approvals for the correct module size and design pressure required to meet the codes in your area. The system is available in Clear & Dark Bronze Anodized, Environmentally friendly Archkote Powder Coating (1000, 6000 & 10K) and custom finishes.

### 3100 & L3100 IMPACT WALL

**Air:** ASTM E283: air shall not exceed .06 CFM when tested at 6.24 PSF.

**Water:** ASTM E547/E331: no uncontrolled Water when tested at 15.00 PSF

**Structure:** ASTM E330: Maximum deflection of L/175 with a safety factor of 1.65.

**Tested Per:** TAS 201, TAS 202, TAS 203

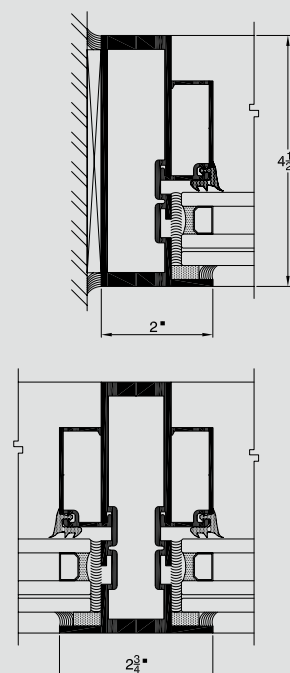
#### Product Approvals

Miami-Dade County 05-0906.04 2004 FBC 6297.1

#### Details & Approval Information:

Complete system details are available on the Arch Product CD or check our websites.

VERTICAL SECTIONS



HORIZONTAL SECTIONS

